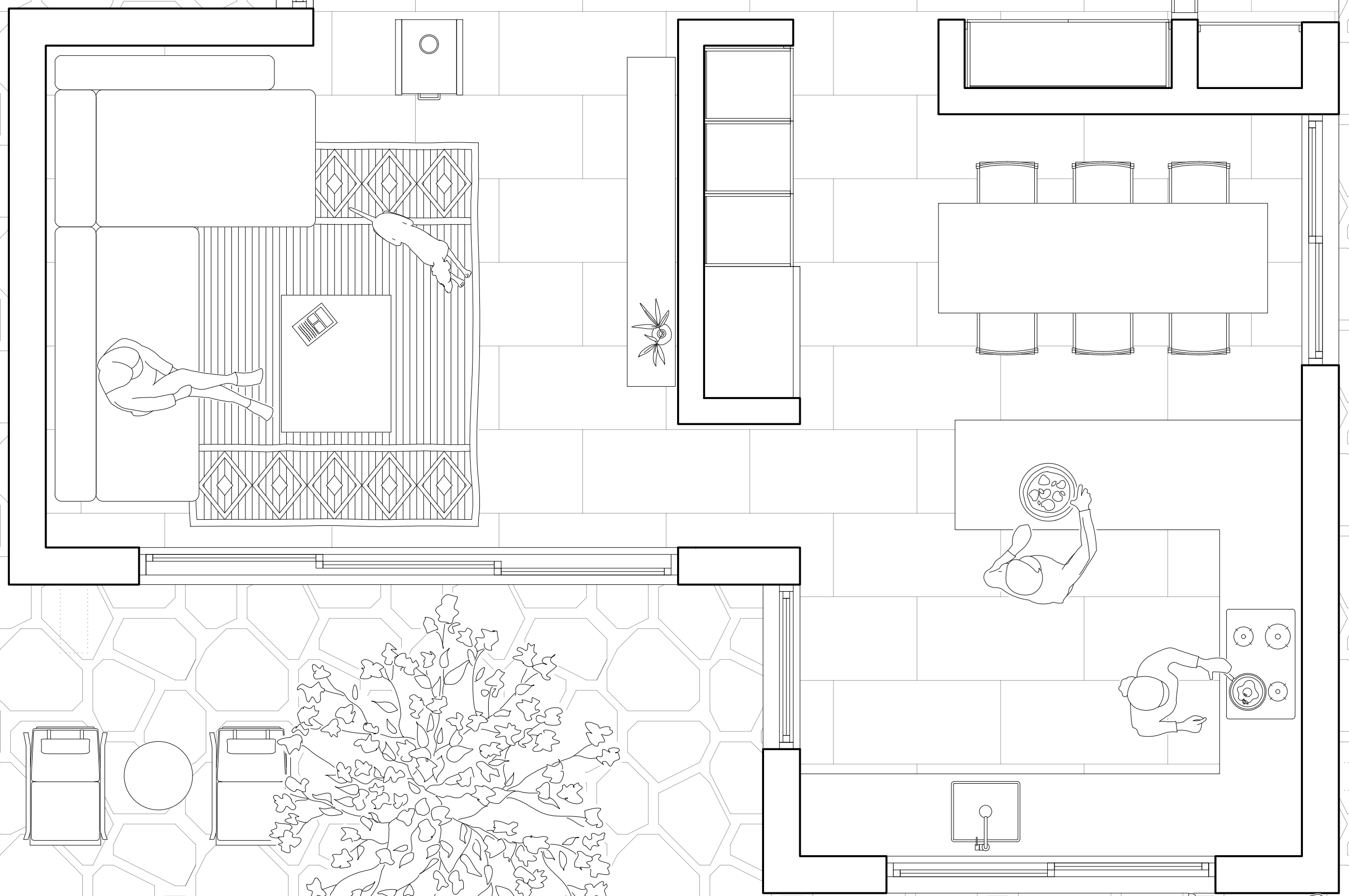


# STUDIO WANNNE



C House

2021

Niğde, TR

Country House

120m<sup>2</sup>

The primary goal of this project was to ensure the preservation of the natural environment, particularly the existing trees on the site, to the greatest extent possible. With this in mind, the placement of the building was carefully considered to avoid any harm to the trees.

We aimed to position the structure within the space between the trees along the northern boundary of the property. This specific area presented a unique opportunity to create a layout that harmonizes with the natural landscape.

The design process was guided not only by the constraints imposed by the proximity of the trees but also by the functional requirements of the users. This approach allowed us to create a building that respects its environment while meeting the needs of those who will inhabit it.



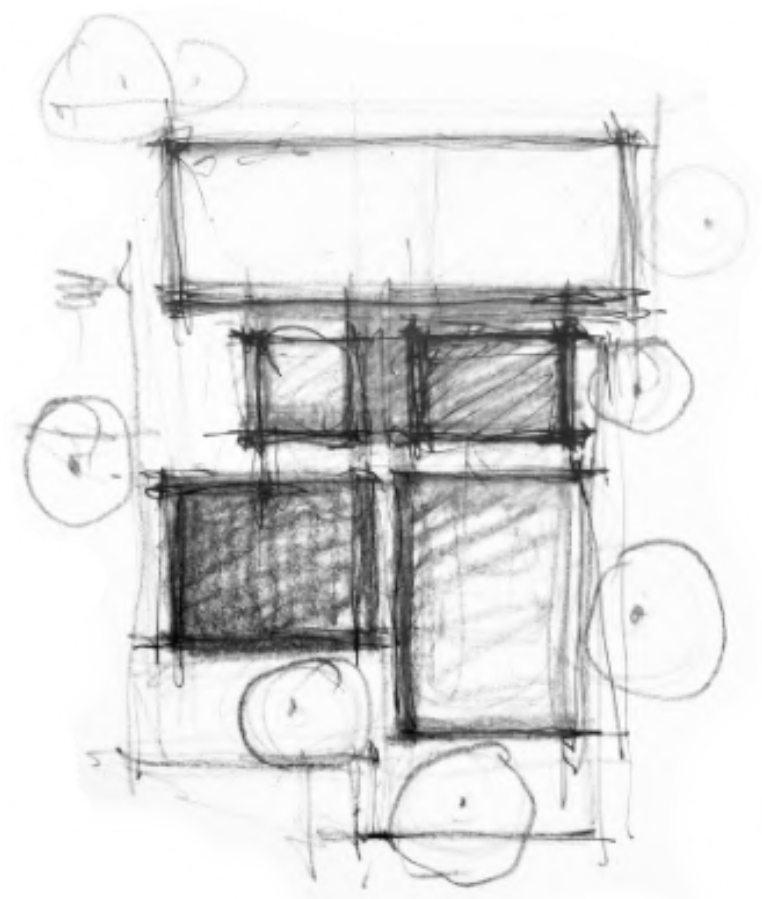
C House

2021

Niğde, TR

Country House

120m<sup>2</sup>



C House

2021

Niğde, TR

Country House

120m<sup>2</sup>



C House

2021

Niğde, TR

Country House

120m<sup>2</sup>



C House

2021

Niğde, TR

Country House

120m<sup>2</sup>



C House

2021

Niğde, TR

Country House

120m<sup>2</sup>



C House

2021

Niğde, TR

Country House

120m<sup>2</sup>





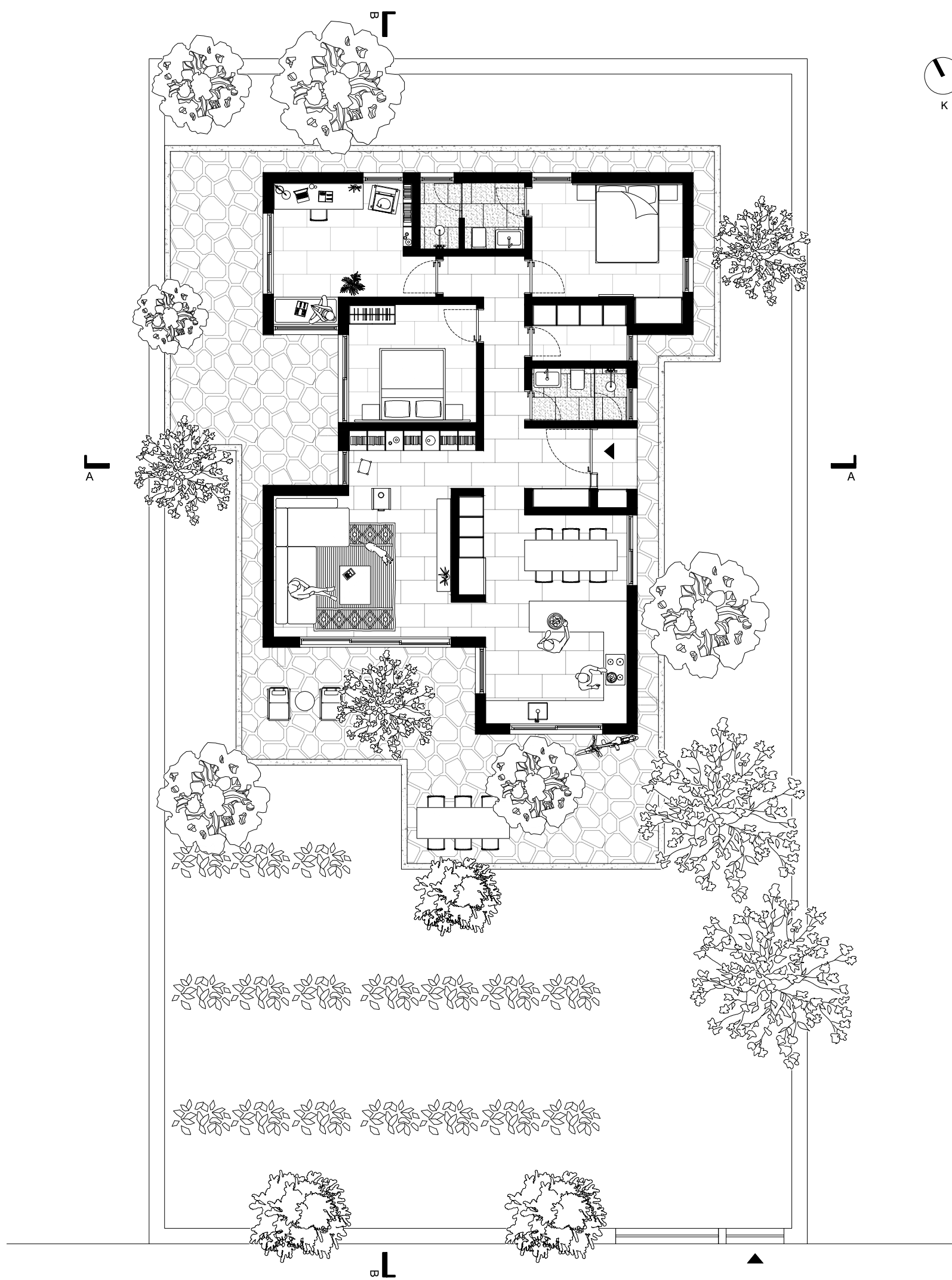
C House

2021

Niğde, TR

Country House

120m<sup>2</sup>



C House

2021

Niğde, TR

Country House

120m<sup>2</sup>

# CREDITS

Client: Private

Typology: Country House

Place: Niğde, TR

Year: 2021

Sqm: 120

Architectural Design: studio wanne

Design Team: Yagmur Cetgin, Mehmet Duru

C House

2021

Niğde, TR

Country House

120m<sup>2</sup>